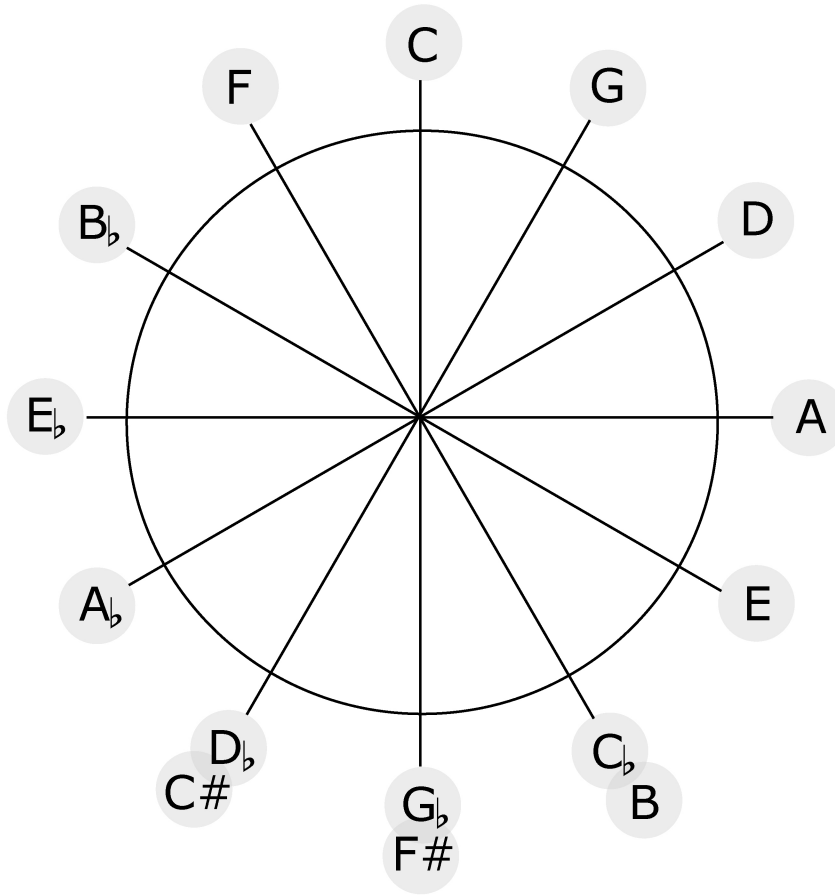


# Key Signatures

circle of 5ths (clockwise)  
and cycle of 4ths (counter-clockwise)



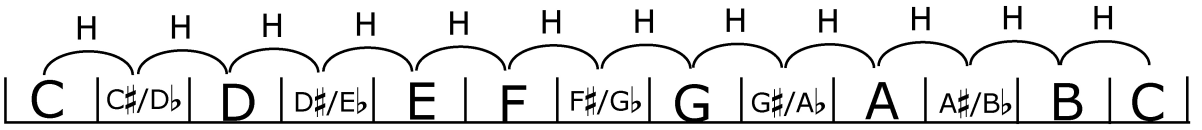
C G D A E B F# C#

C F Bb Eb Ab Db Gb Cb

# Scale Formulas

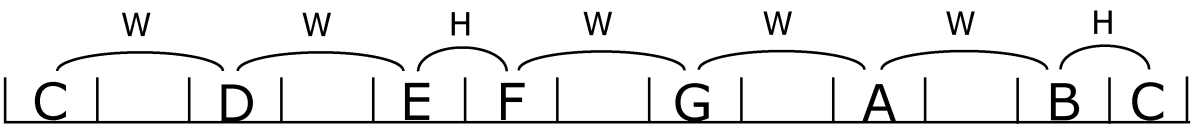
pg. 1 of 2

Chromatic



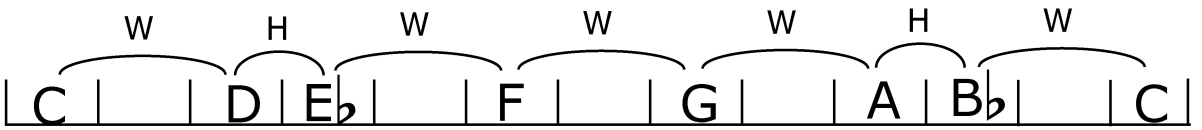
A diagram of the chromatic scale starting on C. The notes are C, C#/Db, D, D#/Eb, E, F, F#/Gb, G, G#/Ab, A, A#/Bb, B, C. Each note is connected to the next by a half-step interval, labeled with 'H' above the notes.

Major



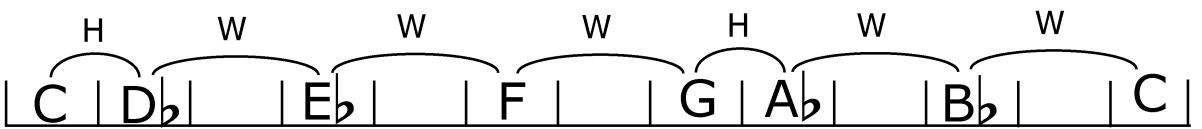
A diagram of the major scale starting on C. The notes are C, D, E, F, G, A, B, C. The intervals between notes are labeled as W (whole) or H (half) above the notes: C to D (W), D to E (W), E to F (H), F to G (W), G to A (W), A to B (W), B to C (H).

Dorian



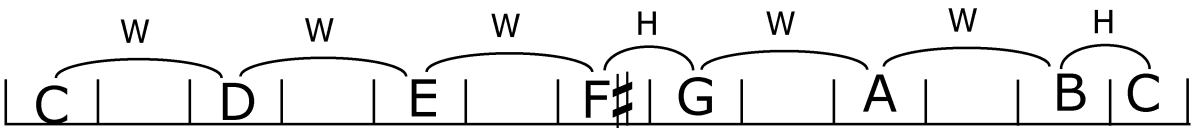
A diagram of the Dorian scale starting on C. The notes are C, D, Eb, E, F, G, A, Bb, C. The intervals between notes are labeled as W or H above the notes: C to D (W), D to Eb (H), Eb to E (W), E to F (W), F to G (W), G to A (W), A to Bb (H), Bb to C (W).

Phrygian



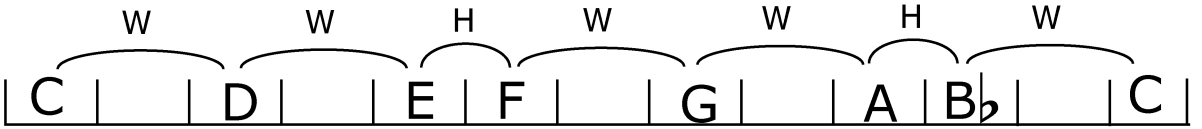
A diagram of the Phrygian scale starting on C. The notes are C, Db, D, Eb, E, F, G, Ab, Bb, C. The intervals between notes are labeled as W or H above the notes: C to Db (H), Db to D (W), D to Eb (H), Eb to E (W), E to F (W), F to G (W), G to Ab (H), Ab to Bb (W), Bb to C (W).

Lydian



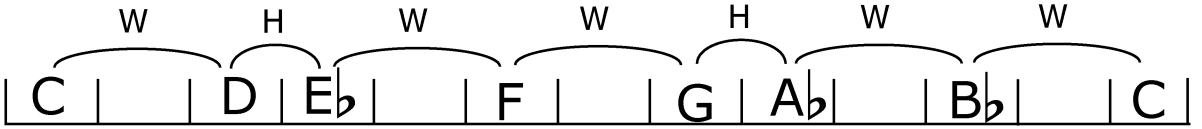
A diagram of the Lydian scale starting on C. The notes are C, D, E, F#, G, A, B, C. The intervals between notes are labeled as W or H above the notes: C to D (W), D to E (W), E to F# (W), F# to G (H), G to A (W), A to B (W), B to C (H).

Mixolydian



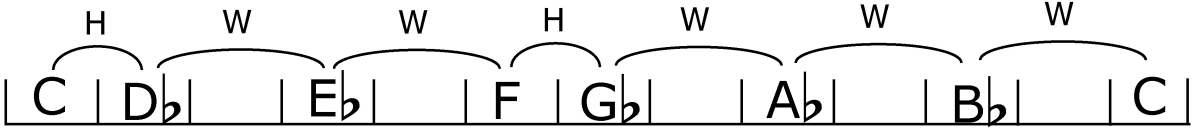
A diagram of the Mixolydian scale starting on C. The notes are C, D, E, F, G, Ab, Bb, C. The intervals between notes are labeled as W or H above the notes: C to D (W), D to E (W), E to F (H), F to G (W), G to Ab (W), Ab to Bb (H), Bb to C (W).

Minor



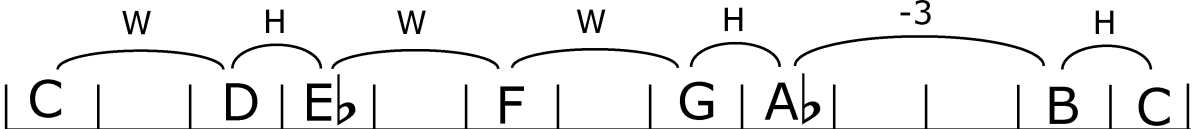
A diagram of the natural minor scale starting on C. The notes are C, D, Eb, E, F, G, Ab, Bb, C. The intervals between notes are labeled as W or H above the notes: C to D (W), D to Eb (H), Eb to E (W), E to F (W), F to G (W), G to Ab (H), Ab to Bb (W), Bb to C (W).

Locrian



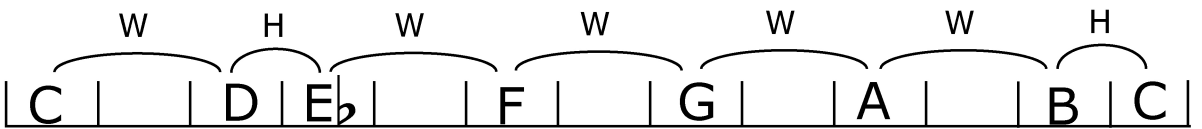
A diagram of the Locrian scale starting on C. The notes are C, Db, D, Eb, E, F, Gb, Ab, Bb, C. The intervals between notes are labeled as W or H above the notes: C to Db (H), Db to D (W), D to Eb (H), Eb to E (W), E to F (W), F to Gb (H), Gb to Ab (W), Ab to Bb (W), Bb to C (W).

Harmonic Minor



A diagram of the harmonic minor scale starting on C. The notes are C, D, Eb, E, F, G, Ab, B, C. The intervals between notes are labeled as W or H above the notes: C to D (W), D to Eb (H), Eb to E (W), E to F (W), F to G (W), G to Ab (H), Ab to B (-3), B to C (H). The interval from Ab to B is labeled as -3, indicating a tritone.

Melodic Minor

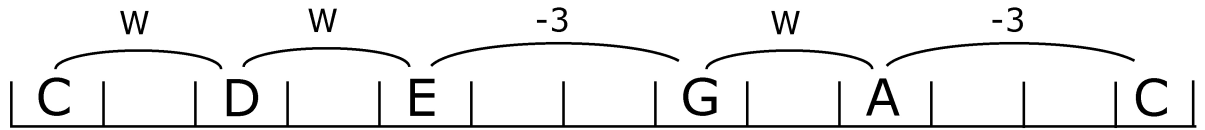


A diagram of the ascending melodic minor scale starting on C. The notes are C, D, Eb, E, F, G, A, B, C. The intervals between notes are labeled as W or H above the notes: C to D (W), D to Eb (H), Eb to E (W), E to F (W), F to G (W), G to A (W), A to B (W), B to C (H).

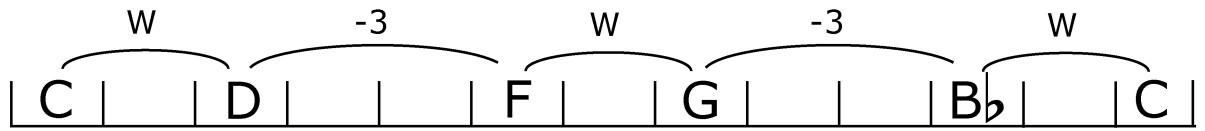
# Scale Formulas

pg. 2 of 2

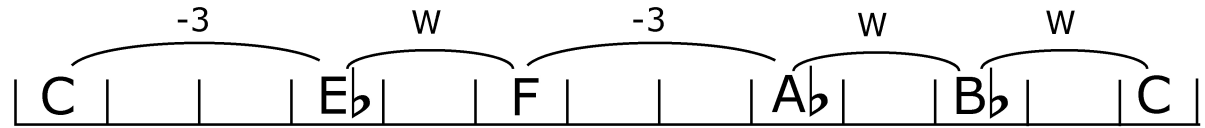
Major  
Pentatonic



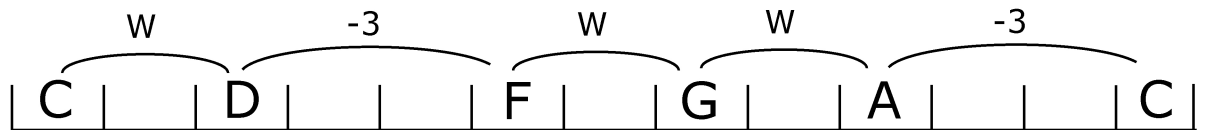
Dorian  
Pentatonic



Phrygian  
Pentatonic



Mixolydian  
Pentatonic



Minor  
Pentatonic

